

2012-2013 Season

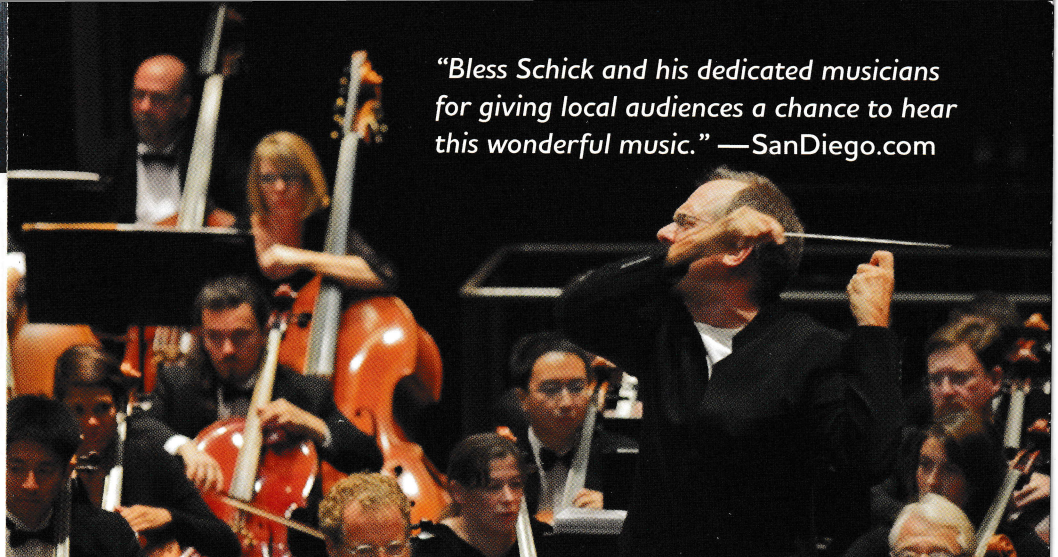
La Jolla Symphony & Chorus

Mandeville Auditorium

Angle of Repose

STEVEN SCHICK
Music Director

DAVID CHASE
Choral Director



“Bless Schick and his dedicated musicians for giving local audiences a chance to hear this wonderful music.” —SanDiego.com

PHOTO: Bill Dean

Welcome to our 2012-2013 season, **Angle of Repose**—an entire season built around themes to be found in Wallace Stegner’s great novel by the same name. We will take the principal plot line of the novel, an extraordinary and poignant relationship between a pioneer-era woman and her 20th-century grandson, and elaborate it in musical terms. As the grandson Lyman Ward thinks and writes about his grandmother, a welter of themes involving relationships between generations emerges. We are asked to consider the inherent friction between old and new and how we deal with the human condition today in ways that are vastly different from our predecessors (or sometimes amazingly similar). It’s a fascinating novel.

We, the musicians of the La Jolla Symphony and Chorus, are taking things a step farther and will portray Stegner’s themes as cross-generational conversations between great pieces of music. We will counterpoise the heroic music of **Beethoven** with the 20th century’s anti-hero **John Cage**. We will hear the bright colors of **Brahms** and contrast them with the duskiest timbres of **Schoenberg** and **Dallapiccola**. We will go “outside” to hear music of the vast spaces in **Nielsen’s** grand *Espansiva* Symphony and contrast that with the intimate music of folk songs in a charming piece by **Luciano Berio**. And we will ask what it means to be an “American” composer by juxtaposing **Edgard Varèse’s** *Amériques* with music by **Chou Wen-chung** and **Philip Glass** with **Paul Dresher’s** *Concerto for Invented Instruments*.

It will be a fascinating conversation across the boundary of generations. And along the way, as you’ve come to expect, there will be great music you know, thrilling music you haven’t yet heard, and new works that none of us has imagined.

The journey continues! On behalf of my colleague, David Chase, I urge you all to join us for next year’s surprising, moving, and heartfelt performances by the La Jolla Symphony and Chorus.



Steven Schick
Music Director



David Chase
Choral Director

Order Online: www.LaJollaSymphony.com

Order by Phone: **858-534-4637**

HERO / ANTI-HERO

November 3-4, 2012 Steven Schick conducts

Missy Mazzoli	<i>Violent, Violent Sea</i> WEST COAST PREMIERE
John Cage	101 LOCAL PREMIERE
John Cage	4'33"
Ludwig van Beethoven	<i>Symphony No. 3 "Eroica"</i>

Concert Sponsors: Dr. Robert Engler & Julie Ruedi

We open our season on the themes found in Wallace Stegner's great novel *Angle of Repose* with differing views of heroism. The ultimate "heroic" piece—Beethoven's Third Symphony—is paired with the young American composer Missy Mazzoli and her turbulent and alluring work. John Cage, the James Dean of 20th-century composers, lets us experience a true anti-hero.

Composer Missy Mazzoli joins us for this concert.

DARK / BRIGHT

December 8-9, 2012 Steven Schick conducts

Georg Friedrich Handel	<i>The Arrival of the Queen of Sheba</i>
Johannes Brahms	<i>Nänie</i>
Arnold Schoenberg	<i>Five Pieces for Orchestra</i>
Luigi Dallapiccola	<i>Piccola Musica Notturna</i>
Johannes Brahms	<i>Triumphlied</i>

Concert Sponsors: Michael & Nancy Kaehr

A brilliant Handel overture and Brahms' stirring *Triumphlied* for chorus and orchestra face off against the darker hues and stirring passions of Schoenberg and Dallapiccola. Join us for a concert of dazzling color and shadowy expression.

"I started to establish the present and the present moved on. Before I can say I am, I was."

—Wallace Stegner from *Angle of Repose*

Missy Mazzoli
November 2012

*Angle
of Repose*



INSIDE / OUTSIDE

February 9-10, 2013 Steven Schick conducts

Ralph Vaughan Williams *Fantasia on a Theme by Thomas Tallis*

Luciano Berio *Folk Songs*

Carl Nielsen *Symphony No. 3 "Espansiva"*

Special Guest: Jessica Aszodi, soprano

Concert Sponsors: Eric & Pat Bromberger / Gary & Susan Brown
Drs. Bill Miller & Ida Houby

Luciano Berio's delightful folk songs sung by Young Artist Winner Jessica Aszodi lead us to muse on music outside the concert hall. In his moving *Fantasia* Ralph Vaughan Williams shows us just how intimate music can feel. Carl Nielsen takes us to the opposite extreme in his *Espansiva* symphony.

REPEAT / MOVE ON

March 16-17, 2013 Steven Schick conducts

Philip Glass *Overture to "La Belle et La Bête"*

Paul Dresher *Concerto for Invented Instruments* LOCAL PREMIERE

Yvonne Wu *Transcriptions of Place* NEE COMMISSION

Aaron Copland *Appalachian Spring*

Special Guest: Paul Dresher, invented instruments

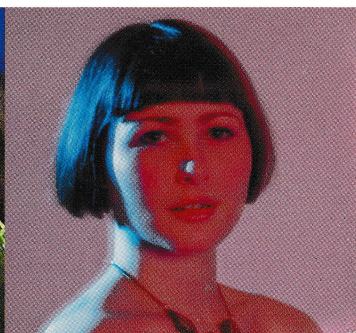
Concert Sponsor: Larry Carter

A fascinating collage of opposites: Philip Glass, the American master of repeating phrases, paired with Aaron Copland's flowing essay on eternal growth and renewal frame the rhythmic vitality of Bay Area composer Paul Dresher's *Concerto for Invented Instruments*. We also premiere this year's Thomas Nee Commission by Yvonne Wu.

Paul Dresher
March 2013

Mary Jaeb
June 2013

Jessica Aszodi
February 2013



OLD WORLDS / NEW WORLD

May 4-5, 2013 Steven Schick conducts

Chou Wen-chung

Landscapes

Richard Strauss

Horn Concerto No. 2

Edgard Varèse

Amériques

Special Guest: Nicolee Kuester, horn

Concert Sponsors: Bloor Family / Rexford & Joan Kastner

Can we hear where we come from? Try this idea on as you listen to the vivid images by the eminent Chinese-American composer Chou Wen-chung paired with Edgard Varèse's tribute to his adopted home in *Amériques*. Richard Strauss's second horn concerto, featuring Young Artist Winner Nicolee Kuester, represents the backdrop of Europe.

EARTH / PEACE

June 8-9, 2013 David Chase conducts

Benjamin Britten

Sinfonia da Requiem

Arnold Schoenberg

Friede auf Erden

Ralph Vaughan Williams

Dona Nobis Pacem

Special Guests: Mary Jaeb, soprano; Dean Elzinga, bass-baritone

Concert Sponsors: Jerry & Beda Farrell / Don & Julie MacNeil
Steve & Janet Shields

Three great 20th-century composers contemplate **peace**—global, personal, spiritual. Britten begins the program with a work inspired by his intense pacifism. Schoenberg paints a picture of mankind evolving from a murky past to a bright future based on "Peace on Earth." We conclude with one of Vaughan Williams' greatest choral-orchestral works, based on the war poetry of Walt Whitman and excerpts from the Bible.

Programs and artists subject to change without notice.

Nicolee Kuester
May 2013

Dean Elzinga
June 2013



LA JOLLA
SYMPHONY
& CHORUS

Affiliated with UC San Diego

STEP 1 **Select Performance Day**

Saturday Evening, 7:30 pm

Sunday Matinee, 2:00 pm

Renewing Subscriber

New Subscriber

STEP 2 **Price Your Subscription**

6 Concerts: Adult Senior (65+) Full-time Student
\$159 \$138 \$60

Ask about UCSD faculty and staff discounts!

No. of Seats	x Price Per Seat	Total Amount
Handling Fee		\$ 6.00
Tax-Deductible Donation		\$
Total Amount		\$

Purchase a Gift Subscription!

Enjoy concerts with family and friends by giving the gift of great music.

Saturday night

Sunday matinee

Call recipient

No. of Seats	x Price Per Seat	Gift Total	Gift + Total from Above
		\$	\$

Include gift subscription total with your own subscription total from above.

Mail gift to my address

Mail gift to recipient (*gift card included*)

Gift Recipient Name _____

Address _____

City _____ State _____ Zip _____

Phone: _____ Email _____

STEP 3 **Method of Payment**

Enclosed check made payable to **LJS&C Association**

Please charge my

VISA

MasterCard

Card# _____ Exp. _____

Name _____

Address _____

City _____ State _____ Zip _____

Phone: _____

Email _____

Important: Please include email address for program updates.

Mail or Fax This Form

La Jolla Symphony & Chorus
9500 Gilman Drive, UCSD 0361
La Jolla, CA 92093-0361 • Fax: 858-534-9947

Subscribe by Phone or Online

Call us at: 858-534-4637
www.LaJollaSymphony.com
Ticket Office Hours M-F 10am - 5pm

SAVE THESE DATES!

GALA 2012

Midnight in Paris

October 13, 2012

Del Mar Marriott

Join us for an elegant evening of dining and dancing, a sparkling reception and lively auction as we celebrate the start of the new season.

CHRISTMAS MESSIAH SING

December 16, 2012

St. Elizabeth Seton Catholic Church

A holiday favorite for the family!

YOUNG ARTISTS WINNERS RECITAL

January 27, 2013

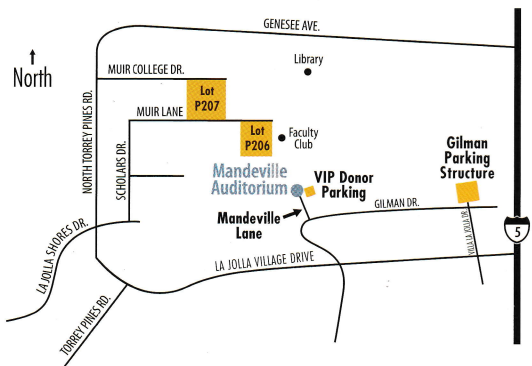
Private home, La Jolla Farms

YOUR CONCERT EXPERIENCE

Pre-Concert Lectures

One Hour Prior to Each Concert—FREE

Hear the "inside story" behind each concert with lively commentary provided by our conductors, guest composers, and guest lecturers. *Mandeville Auditorium*



Subscription concerts take place in Mandeville Auditorium, UCSD campus.

Recommended parking: Lot P207, Lot P206, or Gilman Parking structure.

Handicapped parking is available along Mandeville Lane and in Lot P206.

Parking is free on Saturdays and Sundays.



Major funding for LJS&C is provided by the City of San Diego Commission for Arts and Culture, and the County of San Diego.

